



# New release bargains

From **\$388,140\***

## Coopworth Entrance

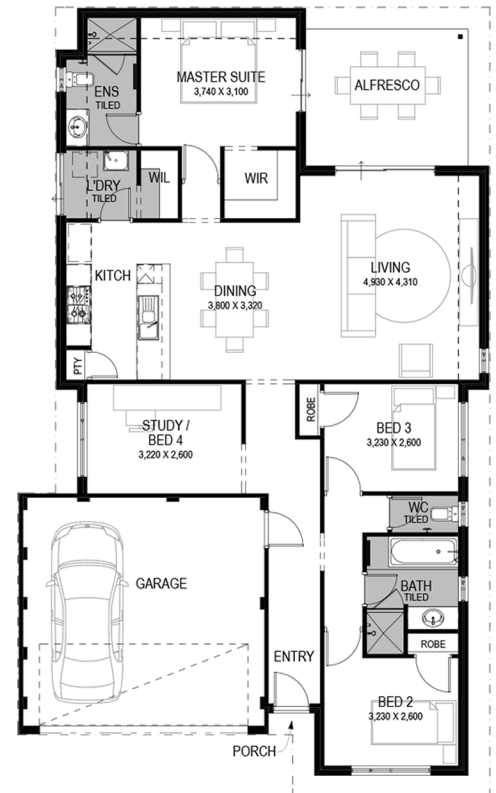
|                                      |   |   |   |
|--------------------------------------|---|---|---|
| HOME AREA<br><b>180m<sup>2</sup></b> | 4 | 2 | 2 |
|--------------------------------------|---|---|---|

The affordable four-bedroom, two-bathroom layout is perfect for growing families, convert the study to a fourth bedroom if you need an extra room.

- 3 bedrooms, 2 bathrooms
- Double car garage with shopper's door
- Outdoor alfresco area
- Kitchen complete with breakfast bar
- Master suite with walk-in-wardrobe and ensuite
- Open plan entertaining area with a huge living area
- Study room/additional bedroom

### Benchmark Specification Inclusions:

- Choice of 900mm or twin 600mm Fisher and Paykel oven and 900mm cooktop and rangehood to kitchen.
- Up to 300x300mm tiling from extensive designer range to bathroom, ensuite, toilets and laundry.
- Your choice of six architect designed elevations with the choice to upgrade.\*
- Choice of Alder Classico Chrome or Alder Flex Black or Chrome fittings and fixtures.
- Your choice of Colorbond, Harmony Villa Concrete and Contemporary Shingles roofing.
- Ask me about upgrading to the Complete Package of Inclusions



**Damen Bramwell**

**M:** 0400 040 047

**E:** [damen@commodorehomes.com.au](mailto:damen@commodorehomes.com.au)

**W:** [commodorehomes.com.au](http://commodorehomes.com.au)



\* See website and specific package for full terms and conditions. Price correct at time of printing. Images and landscaping are for illustrative purposes. Commodore Homes is not the owner of the land. The land is advertised by agreement between Commodore Homes and the land developer and/or vendor. Advertised price does not take include transfer duty, settlement costs and other settlement of the land fees. Provisional sum for site works included in price. BC 9769.