

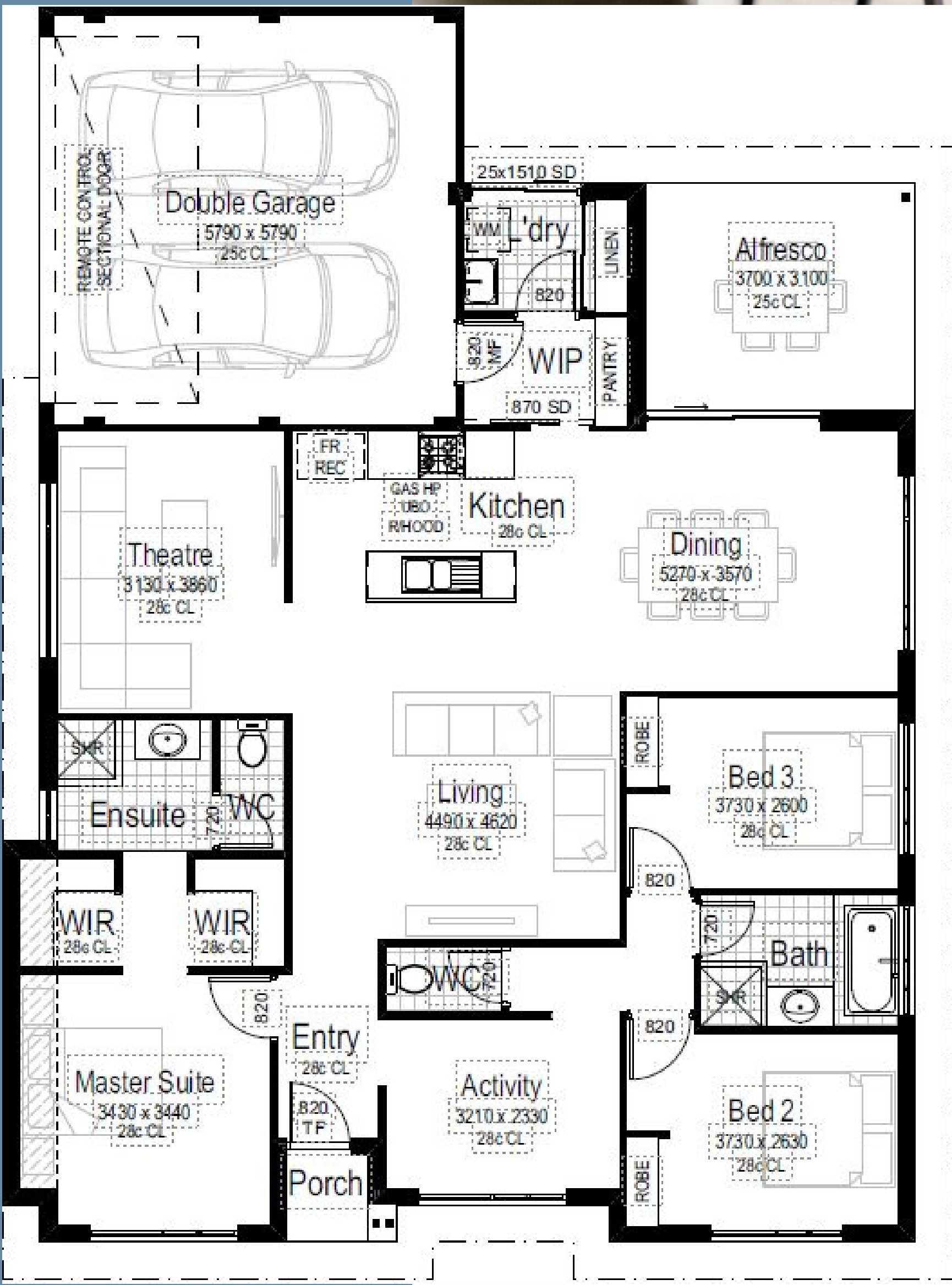
15m



**From \$413,990**  
Lot 1414 Perendale Parkway, **HAYNES**



Haynes lies in a conveniently connected inland corridor between the coast to the west and Perth Hills to the east, 25km from the CBD. Supported by wide-ranging private development and multi-million dollar infrastructure funding, its population and that of the adjoining suburb of Hilbert is projected to grow by 30,000 in the next 10-15 years. So whether you're planning to build a dream family home or looking for an investment, your timing couldn't be better. It's a place that's going places.



**Call Khoj Anand**  
**0403 499 053**

23 Frobisher Street,  
Osborne Park, WA 6017  
khoj@b1homes.com.au  
www.b1homes.com.au